



JNANABHUMI- ENABLING EXCELLENCE



**CONFERENCE CHAIRED BY HON'BLE UNION MINISTER FOR SJ&E
WITH STATE SOCIAL WELFARE DEPARTMENTS
DR. AMBEDKAR INTERNATIONAL CENTRE, NEW DELHI(27.02.2019)**



SOCIAL WELFARE DEPARTMENT, GOAP

“EDUCATION IS
THE MOST
POWERFUL
WEAPON
WHICH YOU
CAN USE TO
CHANGE THE
WORLD.”

—NELSON MANDELA



CONCEPT

"SMART PORTAL FOR INTEGRATED DELIVERY OF SERVICES RELATING TO EDUCATION & SCHOLARSHIPS"

CONCEPTUAL OBJECTIVES

ACTUALISING EQUAL EDUCATIONAL OPPURTUNITIES FOR ALL

SINGLE DESK FOR SCHOLARSHIPS FOR ALL COMMUNITIES

CENTRAL NERVOUS SYSTEM OF EDUCATION & WELFARE ECO
SYSTEM, COVERING THE ENTIRE STUDENT LIFE CYCLE

OPERATIONAL OBJECTIVES

- TIMELY RELEASES
- MINIMAL TOUCH POINTS
- FINITE LOCUS – GREATER ACCOUNTABILITY
- TRANSPARENCY

JOURNEY

YEAR	SOFTWARE	FEATURES
2008-09	SBMS	i. ONLINE STUDENT APPLICATION-FRESH/PHYSICAL VERIFICATION 25 LAKH :350 / SANCTION ONLINE BUT TB OFFLINE
2009-10	EPASS	i. ONLINE STUDENT APPLICATION-RENEWAL
2010-11		i. ONLINE COLLEGE REGISTRATION
2011-12		i. 10,000 V.O. @ 1/ 1-2 COLLEGES/ FEE ENTRY DECENTRALISED/ MEESEVA, SSC & RATION CARD INTEGRATED
2012-13		i. TB ONLINE BUT HARD COPIES SUBMISSION
2013-14		i. AADHAAR BIOMETRIC AUTHENTICATION/ BAR CODING FOR APPLICATION
2014-15		i. BANK A/C. & AADHAAR CONFIRMATION BY DY. DIRECTOR/ DE-LINKING RTF FROM MTF
2015-16		i. ADDRESSED STATE BIFURCATION ISSUES
2016-17		i. TESTING JNANABHUMI FEATURES/HARD COPY UPLOAD DISPENSED/RENEWAL REGISTRATION SIMPLIFIED
2017-18	JNANABHUMI 1.0.	i. 75% ATTENDANCE/ 100 % DATABASE INTEGRATION/ PAPERLESS (HARD COPY DISPENSED AT 3 LEVELS) (A) COLLEGES TO DY.DIR (B)DY.DIR TO TREASURY & (C) STUDENTS UPLOAD / STUDENT REGISTRATION INTEGRATED WITH COLLEGE ADMISSION/ ESIGN & DSK EMBEDDED / MAKER-CHECKER-APPROVER ARCHITECTURE/ 4TH QTR RTF LINKED TO EXAM RESULTS /ARCHITECTURE TESTED FOR MONTHLY MTF & QUARTERLY RTF RELEASE
2018-19	JNANABHUMI 2.0.	i. MONTHLY RELEASE OF MTF/ QUARTERLY RELEASE OF RTF / BIOMETRIC AUTHENTICATION AT MEE SEVA (NEW ADMISSIONS)/ AUTOMATIC BILL GENERATION IN FIFO MODE (THUS ELIMINATING PERSONAL DISCRETION)/ ON BOARDING APSCHE – ONLINE AFFILIATION & EXAMINATION AUTOMATION/ CFMS INTEGRATION/ANALYTICS
2019-20	JNANABHUMI 3.0.	i. UNDER DESIGN- VERSION RELEASE BY 31ST MARCH

CONTEXT

**LARGE,
DIVERSE
&
COMPLEX
ECO SYSTEM**

15
DEPARTMENTS

36
AFFILIATING
AUTHORITIES

8,134
COLLEGES

20,000+
FEE
COMBINATIONS

17+ LAKHS
STUDENTS

2,894
HOSTELS

492
RESIDENTIAL
SCHOOLS

5,000 CRS
ANNUAL
BUDGET

9
DATABASES

8000+
BANK
BRANCHES

**PIT FALLS OF
PREVIOUS SYSTEM**

MANUAL DATA ENTRY BY STUDENTS

ERROR
PRONE

REDUNDANT
ANNUAL
REGISTRATION

COST TO
STUDENTS

MANIPULATED
DOCUMENTS

PHYSICAL EXAMINATION OF 17 LAKHS APPLICATIONS

PHYSICAL
DRUDGERY

PROCESSING
DELAY

TRANSIT DELAY

SCOPE FOR
DISCRETION

COLLEGE/COURSE APPROVAL BY WELFARE DEPARTMENT

AVOIDABLE
WORKLOAD

APPROVAL LOCUS
OUTSIDE OF
EDUCATION
SYSTEM

DELAYS

CET DATA

AFFILIATION DATA

COURSE FEE DATA

VERIFICATION &
RELEASES

SUBOPTIMAL CONVERGENCE

NO LINK TO
ACADEMIC
CALENDAR

NO LINK TO
ATTENDANCE

NO LINK TO
ADMISSIONS

NO LINK TO
COURSE MASTER

RE-ENGINEERING

FEEDBACK

- MULTIPLE STAKEHOLDER DISCUSSIONS/WORKSHOPS

REDEFINING- LOCUS OF CONTROL

- PROCESS INTEGRATION - SCHOLARSHIP + ADMISSIONS
- E-ENABLEMENT-PHYSICAL SERVICES
- (70-80)% OF POST MATRIC STUDENT DATA
- SERIES OF GOVERNMENT ORDERS.
- MASTER DATA SEEDING BY AFFILIATING AUTHORITY

DATABASE INTEGRATION

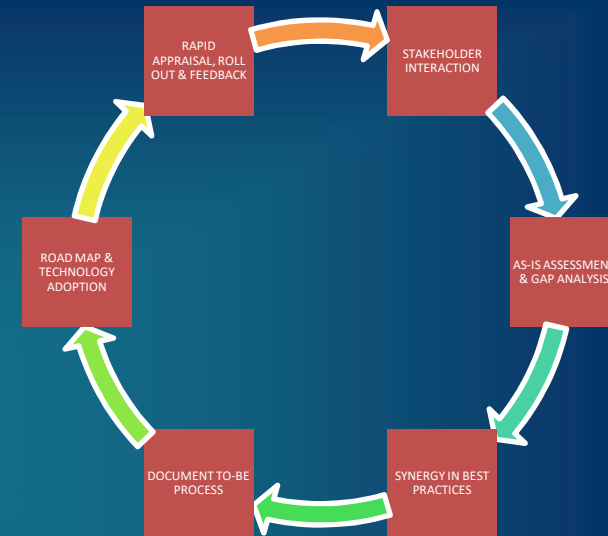
- PULL DATA FROM DATABASES
- 0 ENTRY => 0 ERRORS
- SSC/INTERMEDIATE/REVENUE/CIVIL SUPPLIES/PSS/AADHAR
- DATA INTEGRITY | MINIMUM TRAINING | SEAMLESS

No PAPER TRAIL

- DIGITAL SIGNATURE ENABLED TRANSACTIONS-TO
 - TOKEN & eSIGN

INDIA STACK API

- AADHAR BASED TRIGGER – SOCIAL & FINANCIAL ADDRESS
- PRESENCE-LESS, PAPERLESS AND CASHLESS SERVICES



SUPPORT SERVICES

- 24 X7 HELP DESK
- KAIZALA APP FOR MONITORING/ COMMUNICATION
- PMUS-STATE(SPMU) & DISTRICT(DPMU)
- DASHBOARDS
- INFORMATION SECURITY COMPLIANCE- IT ACT 2000

CORE MODULES

NODAL

CONTROL

OWNER

MODULES

SOCIAL
WELFARE

APSCHE,
HIGHER
EDUCATION
BOARDS
HODs

WELFARE
DEPARTMENTS



COLLEGE



AFFILIATING
AUTHORITY



STUDENT



WELFARE DEPARTMENTS

COLLEGE REGISTRATION

STUDENT ADMISSION

STUDENT BIOAUTHENTICATION

STUDENT ATTENDANCE

COLLEGE AFFILIATION

ACADEMIC CALENDAR

COURSE & COLLEGE MASTERS

FEE STRUCTURE

EXAMINATION RESULTS

CET ADMISSIONS

STATUS TRACKING

CHANGE REQUESTS

APPROVALS USING DSK

SCHOLARSHIPS DISBURSAL

PROCESSES

COLLEGE REGN.

APPLY THROUGH
JNANABHUMI

AFFILIATING
AUTHORITY VERIFIES

COLLEGE
AFFILIATION SUCCESSFUL

AUTOMATIC
REGISTRATION

ACAD.EMIC CALENDAR

AFFILIATING AUTHORITY
UPLOADS ACADEMIC
CALENDAR

BASIS FOR STUDENT
ADMISSION &
ATTENDANCE

FEE STRUCTURE

AFFILIATING AUTHORITY
ENTERS FEE STRUCTURE

BASIS FOR FEE
RELEASES

STUDENT REGISTRATION

NEW ADMISSION

BIOAUTH AT MEE SEVA
CENTRE

RENEWAL

BIOAUTH AT COLLEGE

PRINCIPAL ONE TIME
APPROVAL (OTA) VIA
DSK/ESIGN

ONE TIME
APPROVAL (OTA)
BY WELFARE
DEPARTMENT

SUCCESSFUL
STUDENT
VALIDATION

RTF & MTF RELEASES

ATTENDANCE
(75%) CERTIFIED
BY PRINCIPAL

SYSTEM
GENERATES BILLS
(FIFO)

DD/JD UPLOADS
SYSTEM
GENERATED BILLS
IN CFMS

MTF RELEASE TO
STUDENT'S BANK
A/C.

RTF TO COLLEGE
BANK A/C.

INTEGRATION

AP STATE COUNCIL OF HIGHER EDUCATION

ONLINE AFFILIATIONS

- TIMELY REGISTRATION OF COLLEGES
- VISIBILITY OF COURSES & INTAKES
- COLLEGE INFRASTRUCTURE DETAILS TRACKED
- FACULTY STUDENT RATIO
- DEFICIENCY REPORTS
- COMMITTEE HAVE TOTAL COLLEGE VISIBILITY
- INSPECTION REPORTS UPLOADED ONLINE
- COLLEGE GEO TAGGING
- FINAL AFFILIATION ORDER -GENERATED ONLINE

EXAMINATION SYSTEM AUTOMATION

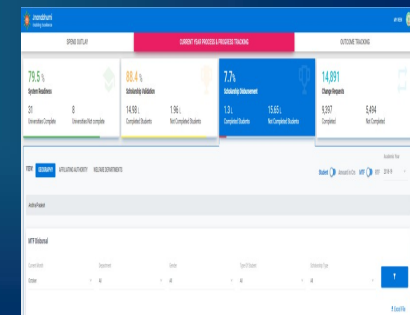
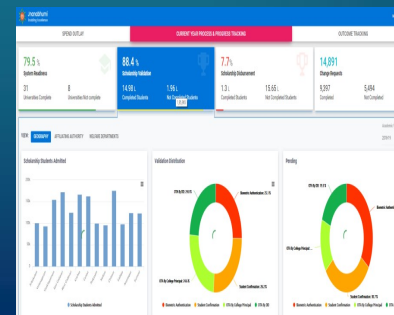
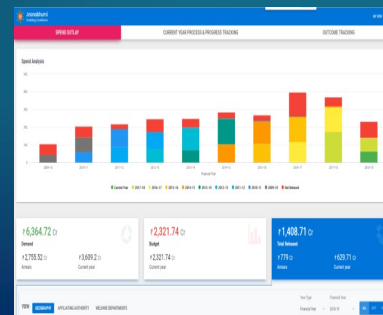
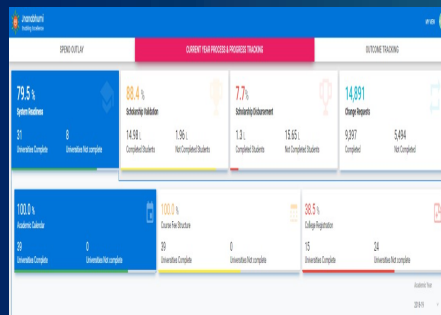
- STUDENT ATTENDANCE & ELIGIBILITY.
- ONLINE EXAM FEE COLLECTION
- INTERNAL MARKS MONITORING
- EXEMPTION CERTIFICATES UPLOAD
- NOMINAL ROLES GENERATION
- EXAMINATION CENTRE ALLOCATIONS
- QUESTION PAPER REQUIREMENT GENERATION.
- HALL TICKETS GENERATION
- RESULTS PUBLISHING

BOARD OF INTERMEDIATE EDUCATION

- BIE (10 LAKH STUDENTS) IS ALREADY END TO END INTEGRATED WITH JNANABHUMI.
- AFFILIATIONS, ADMISSIONS, ATTENDANCE, NOMINAL ROLL, HALL TICKET GENERATION & EXAM RESULTS.

ANALYTICS & DECISION SUPPORT SYSTEMS

- BIG DATA SYSTEM FOR PROCESS TRACKING & ANALYSIS-VASSAR LABS
- ROLE BASED DASHBOARDS FOR EACH FUNCTIONARY
- REAL TIME DATA UPDATE IN DASHBOARDS
- MULTIPLE DIMENSIONAL VIEW- AFFILIATING AUTHORITY, GEOGRAPHY, DEPARTMENTS.
- TRACKING BY FINANCIAL & ACADEMIC YEARS.
- TRACKING BY STUDENTS & AMOUNTS.
- LAST MILE VISIBILITY TO INDIVIDUAL STUDENT
- IMPACT ANALYSIS IN FUTURE



LIFE CYCLE APPROACH

JNANABHUMI WEB PORTAL DESIGNED FOR COMPLETE STUDENT LIFE CYCLE

COLLEGE AFFILIATION
(END TO END AUTOMATION)

ADMISSION OF STUDENTS

STUDENT DETAIL VALIDATION
REAL TIME

ATTENDANCE

ACADEMICS
(END TO END AUTOMATION)

SCHOLARSHIP RELEASE
(MTF & RTF)

SCHEME	DEPARTMENTS	STUDENTS/AMT
PRE-MATRIC SCHOLARSHIPS (5 TH TO 8 TH)	SC/ST/MINORITY/D.A.	2 LAKHS/20 CRS
PRE-MATRIC SCHOLARSHIPS (9 TH TO 10 TH)	SC/ST/BC/MINORITY/D.A	2.5 LAKHS/60 CRS
BEST AVAILABLE SCHOOLS (1ST TO 10 TH)	SC/ST	0.31 LAKHS/80 CRS
CORPORATE COLLEGE (INTERMEDIATE)	SC/ST/BC/EBC/MINORITY/D.A.	0.36 LAKHS/25 CRS
POST MATRIC SCHOLARSHIPS (INTERMEDIATE TO PHD.)	SC/ST/BC/EBC/KAPU/MINORITY/D.A.	17 LAKHS/3500 CRS
AMBEDKAR OVERSEAS (MBBS/PG/PHD.)	SC/ST/BC/EBC/KAPU/MINORITY/D.A.	0.025 LAKHS/150 CRS
VIDYONATHI (CIVIL SERVICES)	SC/ST/BC/EBC/KAPU/MINORITY/D.A.	0.65 LAKHS/150 CRS
AP STUDY CIRCLES (ALL COMPETITIVE EXAMS)	SC/ST/BC	0.20/50 CRS
HOSTELS (PRE & POST MATRIC)	SC/ST/BC/MINORITY/D.A.	3.6 LAKHS/350 CRS
RESIDENTIAL SCHOOLS (5 TH TO 12 TH)	SC/ST/BC/MINORITY/D.A.	1.6 LAKHS /500 CRS
		GRAND TOTAL 28.2 LAKHS/4,885 CRS

DIGITAL TRANSFORMATION STANDARDS

DATA REUSE

- AADHAR
- SSC & INTERMEDIATE
- CASTE FROM MEE-SEVA
- FAMILY/RESIDENCE FROM PSS/RATION CARD
- DIFFERENTLY ABLED FROM- SADAREM

CONTACT LESS /PAPER LESS/CASHLESS

- ONLINE- DATABASES-ZERO DOCUMENTS UPLOAD
- DIGITAL VALIDATION OBVIATES NEED FOR FIELD VERIFICATION
- DIGITAL SIGNATURE
- 2 FACTOR AUTHENTICATION
- PAYMENTS MADE ONLINE THROUGH CFMS

AUTOMATION-DIGITAL TRANSFORMATION

- AUTOMATED VERIFICATION
- MAKER-CHECKER-APPROVER
- DSK/E-SIGN EMBEDDED
- REAL-TIME VALIDATIONS
- AUTOMATIC BILL GENERATION
- NON-DISCRETIONARY - FIFO

SECURITY

- HTTPS ENABLED

SINGLE SIGN ON-(SSO)

- SINGLE LOGIN- MULTIPLE SERVICES

CONCURRENCY

- 60,000 CONCURRENT USERS

LOCALISATION

- LOCALISATION IMPLEMENTED

BEFORE & AFTER

ACTIVITY	BEFORE (UPTO 2016-17)	AFTER (FROM 2017-18)
	PER TASK	
COURSE FEE	8 MONTHS	2 MONTHS
COURSES	>6 MONTHS	
COLLEGE AFFILIATION	8 MONTHS	
COURSE AFFILIATION	8 MONTHS	
STUDENT REGISRTATION/ADMISSION	>6 MONTHS	TIED UP
ATTENDANCE (75%)	NOT TIED UP	
RELEASE	>ACADEMIC YEAR	MONTH/QUARTER
ACADEMICS	NOT CAPTURED	CAPTURED
PROCESSES	DISCRETIONARY	FIFO

MAN DAYS SAVED

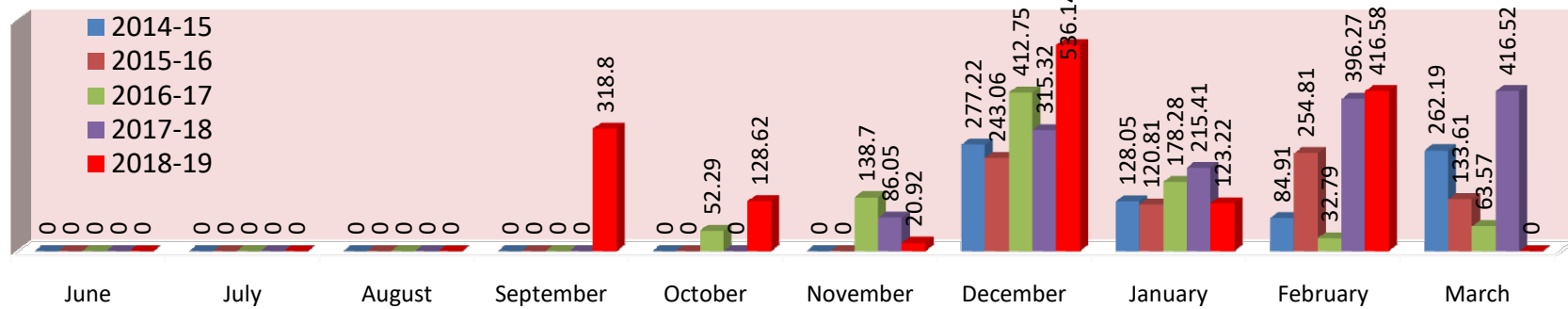
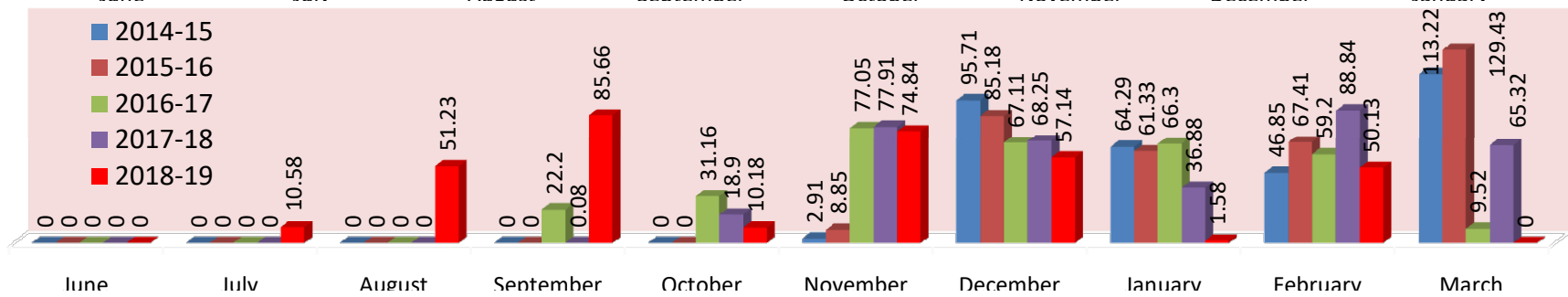
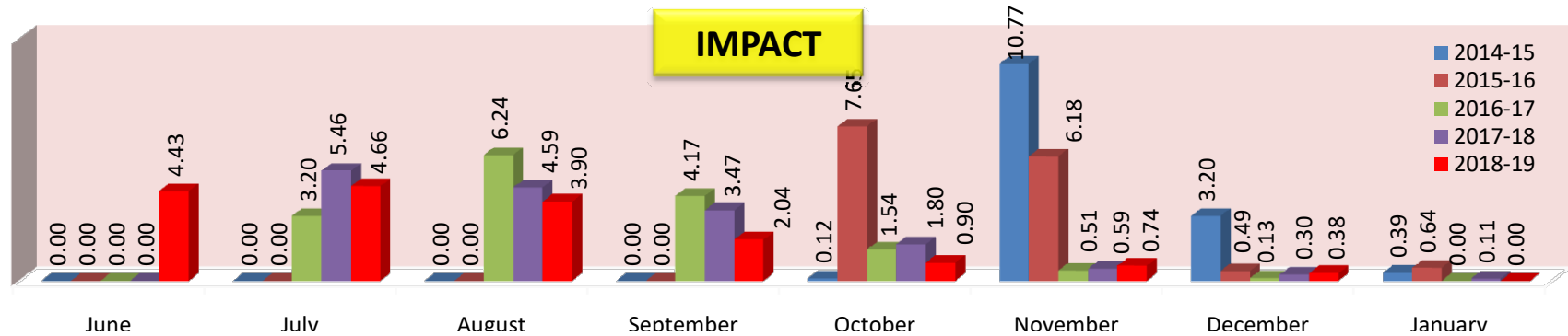
INTEREST SAVED

TIME SAVED

TIMEBOUND
SERVICE DELIVERY

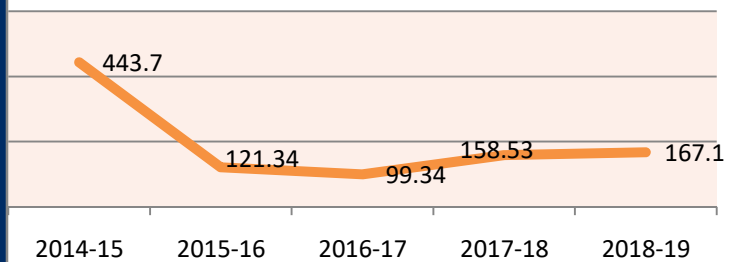
NIL STUDENT DEBT

FORESTS SAVED-
ZERO CARBON
FOOTPRINT

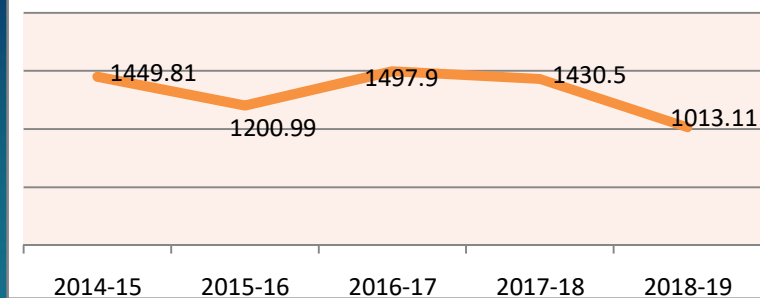


IMPACT- FUND DISBURSAL

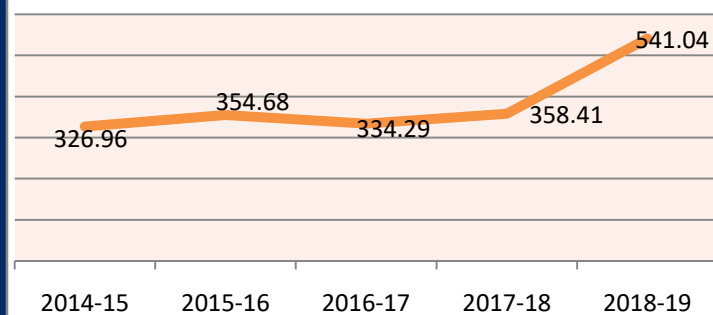
ARREAR-MTF



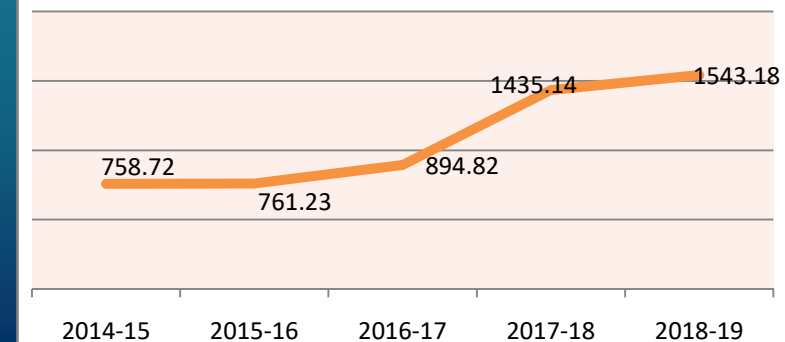
ARREARS-RTF



CURRENT-MTF



CURRENT-RTF



BEST PRACTICES & OUTCOMES

BEST PRACTICES	OUT COMES
<ul style="list-style-type: none"> •ONLINE AFFILIATION OF COLLEGES • AUTOMATIC GENERATION OF BILLS • FIRST IN FIRST OUT PROTOCOL(NON DISCRETIONARY) • HELP DESK/DPMU/SPMU •TRAININGS /WORKSHOPS/TELE & VIDEO CONFERENCES •STATE & DISTRICT LEVEL COMMITTEES • DATA ANALYTICS • LOCALISED REDRESSAL OF GRIEVANCES: <ul style="list-style-type: none"> •STUDENT GRIEVANCES RESOLVED AT COLLEGE LEVEL •COLLEGE GRIEVANCES RESOLVED AT AFFILIATING AUTHORITY •ONLINE CERTIFICATE VERIFICATION IN CET 	<p>2016-17</p> <p>RS.3,400 CRORES DISBURSED TO 16 LAKH STUDENTS</p> <p>(HIGHEST EVER DISBURSEMENT)</p>
	<p>2018-19</p> <p>RS.3,200 CRORES DISBURSED TO 16.5 LAKH STUDENTS (TILL NOW)</p> <p>MTF TO STUDENTS EVERY MONTH</p> <p>RTF EVERY QUARTER</p>

WAY FORWARD

DIGITAL LOCKER INTEGRATION -CENTRAL REPOSITORY FOR EDUCATION, CATEGORY, INCOME,ETC.

BACKWARD INTEGRATION WITH SCHOOL EDUCATION DB-ENTIRE STUDENT LIFECYCLE MAPPED

CONCURRENT AUDIT

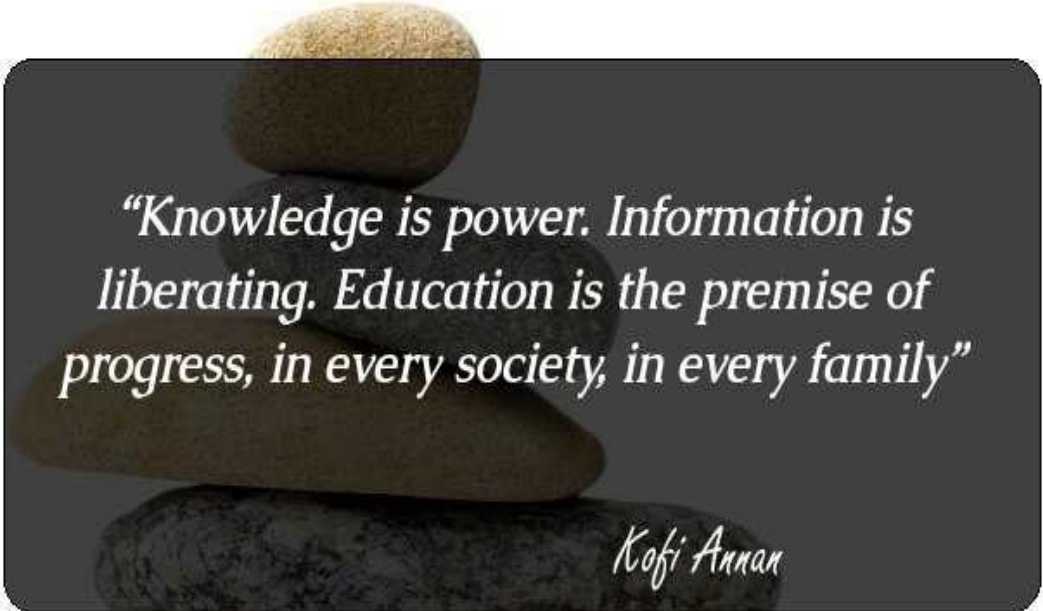
AADHAAR PAYMENT BRIDGE FOR TRANSACTION

HORIZONTAL AND VERTICAL LINKAGES-SKILL DEVELOPMENT ,PLACEMENT SERVICES,ETC.

STUDENT FORUM



A PLATFORM THAT WILL BRING TOGETHER INDUSTRY, STUDENTS & ACADEMIA



*“Knowledge is power. Information is
liberating. Education is the premise of
progress, in every society, in every family”*

Kofi Annan

THANK YOU!